



6 Reney Crescent, Greenhill, Sheffield, S8 7FS

Saxton Mee



# 6 Reney Crescent

## Greenhill

Guide Price

# £200,000

GUIDE PRICE £200,000 - £210,000

Located in the highly sought-after area of Greenhill, this charming 2-bedroom terrace property offers a fantastic opportunity to live in a vibrant neighbourhood, with easy access to local amenities, schools, transport links, and the beautiful and vast Graves Park.

The ground floor features a spacious open-plan kitchen diner which overlooks the garden and has a door opening onto the garden also, perfect for everyday living and entertaining, along with a bright, dual-aspect living room with log-burner, that opens up through large sliding doors onto a well-maintained and beautiful garden.

Upstairs, you'll find two generously sized double bedrooms; the main bedroom benefits large fitted wardrobes and the second bedroom features a walk-in wardrobe, and a stylish family bathroom with a contemporary white suite.

The enclosed garden is a real highlight, offering a lovely patio area ideal for relaxing or dining outdoors, as well as a large lawned space perfect for families. To the front, the property benefits from a good-sized driveway, providing off-road parking for multiple vehicles.

This property is ideal for those seeking a comfortable and well-located home. Don't miss out – early viewing is highly recommended.

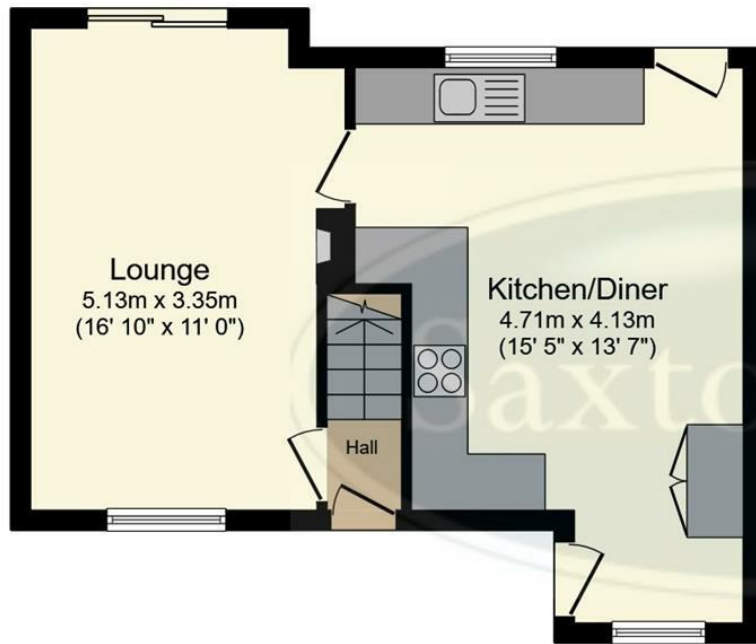
- Excellent Location
- Immaculately Presented Throughout
- Two Double Bedrooms
- Open Plan Kitchen Diner
- Dual Aspect Living Room
- Ample Parking On the Driveway
- Modern Bathroom with white Suite
- A Fantastic Garden To The Rear With Two Seating Areas





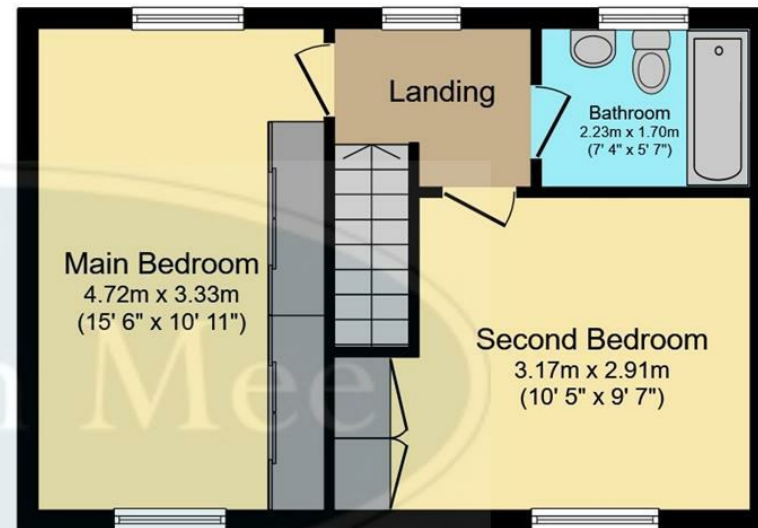






## Ground Floor

Floor area 39.0 m<sup>2</sup> (420 sq.ft.)



## First Floor

Floor area 38.9 m<sup>2</sup> (418 sq.ft.)

**TOTAL: 77.9 m<sup>2</sup> (838 sq.ft.)**

This floor plan is for illustrative purposes only. It is not drawn to scale. Any measurements, floor areas (including any total floor area), openings and orientations are approximate. No details are guaranteed, they cannot be relied upon for any purpose and do not form any part of any agreement. No liability is taken for any error, omission or misstatement. A party must rely upon its own inspection(s). Powered by [www.Propertybox.io](http://www.Propertybox.io)

While we endeavour to make our sales particulars fair, accurate and reliable, they are only a general guide to the property and, accordingly, if there is any point, which is of particular importance to you, please contact the relevant office. The Agents have not tested any apparatus, equipment, fittings or services and so cannot verify they are in working order. The buyer is advised to obtain verification. Please note all the measurement details are approximate and should not be relied upon as exact. All plans, floor plans and maps are for guidance purposes only and are not to scale. Under no circumstances should they be relied upon as exact or for use in planning carpets and other such fixtures, fittings or furnishings. YOUR HOME IS AT RISK IF YOU DO NOT KEEP UP REPAYMENTS ON A MORTGAGE OR OTHER LOAN SECURED ON IT. 'A Life Assurance policy may be requested.' 'Written Quotations of credit terms available on request.'

Banner Cross  
T: 0114 268 3241  
E: [bannercross@saxtonmee.co.uk](mailto:bannercross@saxtonmee.co.uk)  
[www.saxtonmee.co.uk](http://www.saxtonmee.co.uk)

Hathersage  
T: 01433 650009  
E: [hathersage@saxtonmee.co.uk](mailto:hathersage@saxtonmee.co.uk)

Bakewell  
T: 01629 815307  
E: [bakewell@saxtonmee.co.uk](mailto:bakewell@saxtonmee.co.uk)

Matlock  
T: 01629 828250  
E: [matlock@saxtonmee.co.uk](mailto:matlock@saxtonmee.co.uk)

